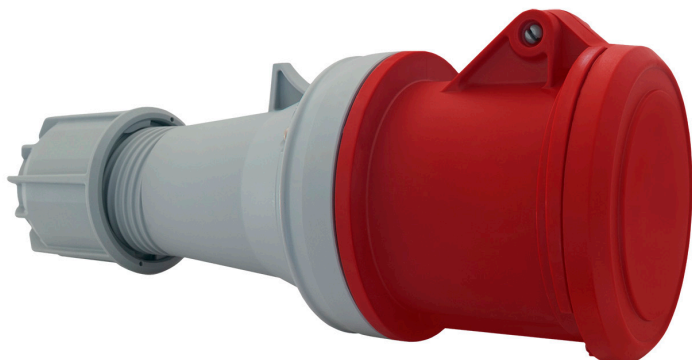
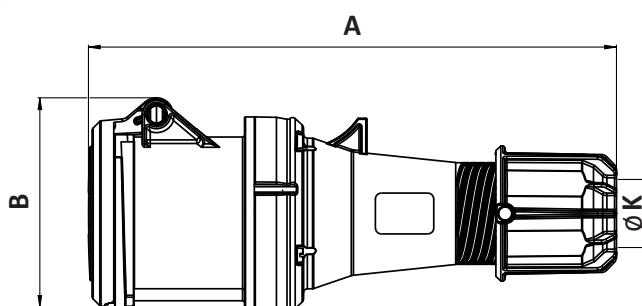


POWtec CEE Connectors IP44



- Splash-proof, IP44
- Screw terminals
- Brass with lamellar contact CuBe with pilot contact



Dimensions (mm)			
Poles	3	4	5
Current	63A		
A	269	269	269
B	107	107	107
K	14.5-36	14.5-36	14.5-36
Weight (g)	624	664	720

Voltage		230 V~	400 V~
Frequency		50/60 Hz	50/60 Hz
Designation		3p = 6h 4p/5p = 9h	3p = 9h 4p/5p = 6h
Current	Poles	Part No.	Part No.
63A	3	POWtecS-363B-T044	-
63A	4	POWtecS-463B-T044	POWtecS-463R-T044
63A	5	POWtecS-563B-T044	POWtecS-563R-T044